

November 15, 2013



Your Printer Solutions Company

PEAK Technologies, Inc.

A Platinum Equity Company

187 Crosby Road

Dover, New Hampshire USA 03820

(603) 742-7095

**MTP-22XX
&
MTP-28XX
Flash Update Procedure
Using HyperTerminal**

Introduction

This procedure describes how to update the firmware on the Telpar MTP-28XX and MTP-22XX thermal printers. This operation is performed through the serial port and the serial interface of the printer.

Materials Required

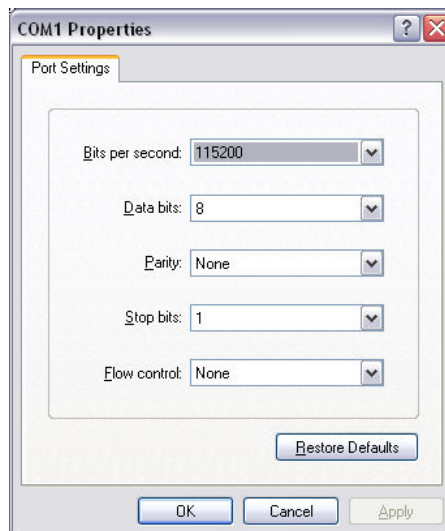
1. Telpar Printer
2. Flash update file, 'filename.bin'. Available on the Telpar web site at [http://www.telpar.com/Drivers and Support/Technical Bulletins.aspx](http://www.telpar.com/Drivers_and_Support/Technical_Bulletins.aspx)
3. Telpar Serial Cable Adapter 800410-0015
4. RS-232 Serial Cable
5. Computer
6. Serial Port
7. Terminal Program (ie. HyperTrm)

Instructions

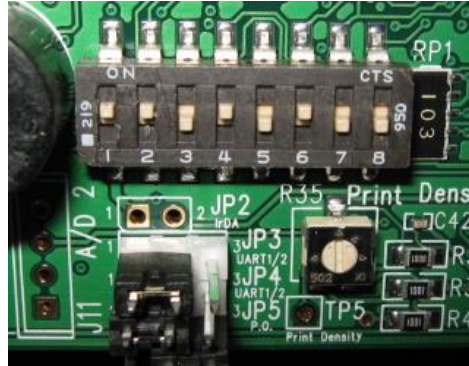
1. Connect a serial cable between a PC and J9 on controller board.



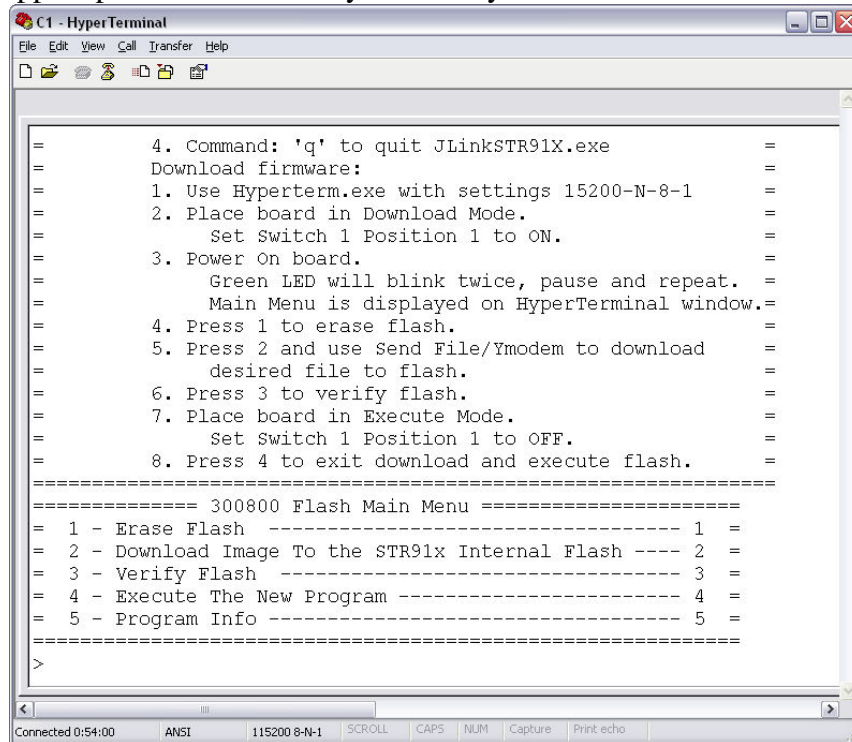
2. Start terminal program, (ie HyperTrm) and configure with settings at 115,200-N-8-1. Hypertm example is shown below.
 - a. Start > Programs > Accessories > Communications > HyperTerminal
 - b. Name Configuration
 - c. Select Comm Port
 - d. Configure port settings
 - i. 115,200 Baud
 - ii. 8 Data bits
 - iii. No Parity
 - iv. Flow Control – None



3. Enable the flash update procedure by setting the Printer Switch 1 (SW1) Position 1 to ON. SW1 is located on the PC board near the buzzer. Position 1 is located farthest to the left.



4. Turn the printer power on.
 - a. The Printer LED's will be cycling a pattern and the buzzer will beep.
 - b. A Menu will appear in the HyperTerminal window. If the window does not appear press the 'Enter' key on the keyboard.



5. Press 'Enter' to display 'In-Application Programming' Menu. (displayed above in 4b)

November 15, 2013

6. Steps to update the flash in the printer:
 - a. Erase the printers flash memory.
 - i. Press '1' to Erase Flash.
 - ii. Wait several seconds for operation to complete.
 - b. Download the update to the printers flash.
 - i. Press '2' to download flash.
 - ii. Select Hyperterm Menu item 'Transfer->Send File...'
 - iii. Browse for flash file to download and select it.
 - iv. Select 'Ymodem' for the Protocol.
 - v. Press 'Send'.
 - vi. Wait for download to complete.
 - c. Verify the update succeeded.
 - i. Press '3' to verify flash.
7. Press '4' to execute new program in flash.
8. Turn the printer power off.
9. Set Printer Switch 1 Position 1 to OFF.
10. Print a Self-Test to verify printer operation and firmware version.
 - a. Hold Feed Button while turning printer power on.
 - b. Release Feed button after one beep.