



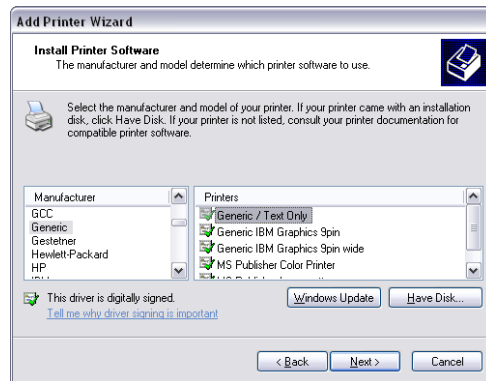
187 Crosby Road
Dover, New Hampshire USA 03820
(603) 742-7095
www.telpar.com

Generic / Text Only Printer Driver With Cut Command

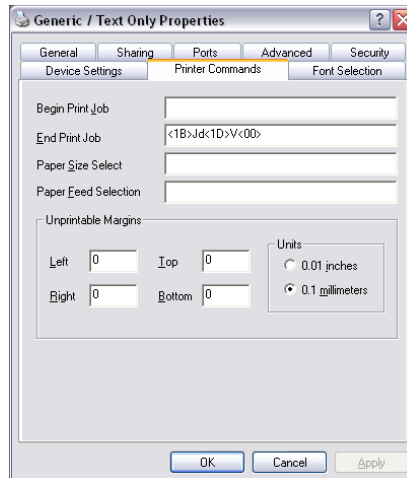
Introduction:

This procedure describes how to setup the Windows Generic / Text only printer driver to operate with a cut operation at the end of print.

1. Install the Windows 'Generic/Text Only' printer driver.
 - a. Select 'Start->Settings->Printers and Faxes'.
 - b. In Printers and Faxes select 'Add a Printer'
 - c. Follow the wizard to add the printer.
 - i. At the 'Install Printer Software' window select the following:



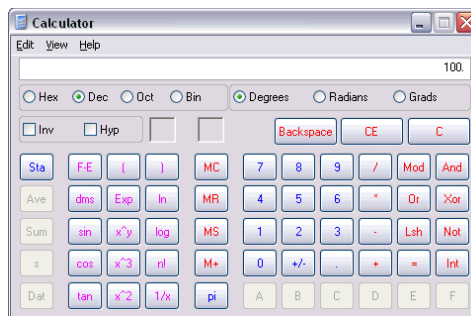
- ii. Continue with the wizard steps.
2. Add 'Advance Forward' and 'Paper Cut' command at end of document.
 - a. Select 'Printer Commands' Tab and update as shown:



- i. The printer escape sequences shown are as follows
 1. <1B>Jd = ESC J 0x64, Advance paper forward 100 dot lines, approximately ½ inch.
 2. <1D>V<00> = GS V 0, Paper Cut full command.
- ii. If you would like to change the cut position you just need to change the value in the cut command. This is currently set to 100 dot lines, approximately 1/2 inch on a 200 DPI printer, which positions the cut position just after the last line of printed text on an MTP-640.
- iii. When the following is entered for moving the paper 100 dot lines

<1B>J<64>

the '<64>' represents 64 hex which is 100 decimal,
but windows will convert this to ascii which is the letter 'd'.
<1B>Jd
- iv. If not familiar with hex values you can use the windows calculator, set it to scientific mode, enter a decimal value and convert it to hex.



- b. Click 'OK' to close the window.
3. Update the document being printed to use the Generic / Text printer.