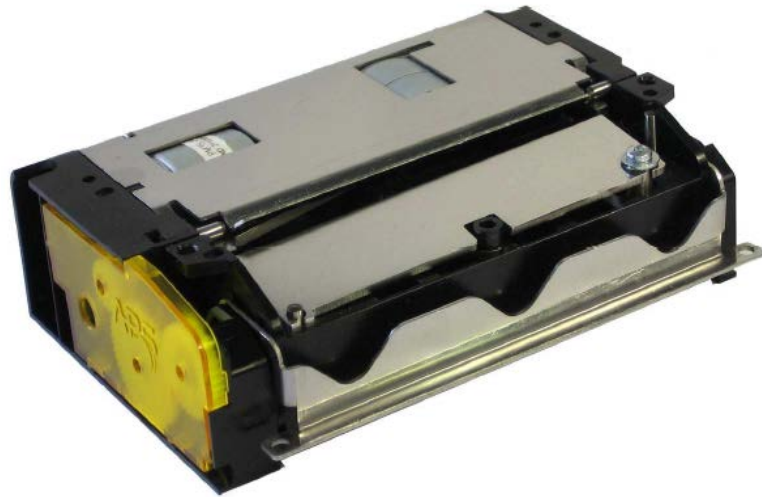


HSP 3000 Series

Ultra High Speed - Heavy Duty Thermal Printers



86 mm



Options

- Controller Board
- Label / black mark detection sensor
- Double Opto
- 300 dpi

Applications

- Ticketing (paper width adapted to railway ticketing industry)
- ATM
- Data terminals
- Gaming and lottery
- Gas pumps
- Kiosks
- Parking meters
- Vending machines

Features

- 86 mm paper width adapted for the railway ticketing industry
- +50% resolution, i.e. 12 dots/mm
- Cuts up to 220 µm (10 mils)
- Over 200 mm/s printing speed
- 200 km printing life
- 2 million cuts life (full & partial)
- High-speed printing with historic control
- Wide operating temperature range
- Near end-of-paper sensor interface
- Barcode support
- Kiosk and Easy loading versions*

Specifications

HSP3512-86-KS/EL

| | |
|------------------------------|--------------------------------------|
| Printing method | Thermal |
| Number of dots | 960 |
| Resolution (dots/mm) | 12 |
| Printing width (mm) | 80 |
| Paper width (mm) | 86 |
| Max. paper thickness (µm) | 63 and 190 |
| Paper loading | Easy Loading |
| Printing speed (mm/s) | up to 200 (7.9 ips)** |
| Paper detection | Opto sensor |
| Temperature detection | Thermistor |
| Cover-open detection | Mechanical switch |
| Voltage range (Logic / Head) | 5V or 3.3V 24 typical, 26.5 V max. |
| Dot resistance (Ohm) | 800 ± 3 % |
| Energy per dot (mJ) | 0.17 |
| Weight (g) | 450 |
| Printing life/reliability | 200 km/100M pulses |
| Cutter life | 2M cuts |
| Operating temperature (°C) | -20 to +60 °C |
| Operating humidity (%) | 10 to 90 (no condensation) |
| Dimensions (WxDxH mm) | 125x82.5x35.7 |
| Cutter speed (default mode) | 220 µm in 550 ms |
| Cutter speed (high speed) | 80 µm in 240 ms |
| Cutter detection | Mechanical switch |
| Black mark sensor position | Left or right |
| Printer version | Kiosk or Easy Loading* |



*3512-86-KS Kiosk version



*3512-86-EL Easy Loading version

**under certain driving conditions & using recommended paper