

# CM SERIES **CUSTOM**

## HEAVY DUTY THERMAL PRINTING MECHANISMS

### MAIN FEATURES

- Paper width: 60/112mm
- 200dpi (8dots/mm) printing resolution
- Autoloading capability
- Aluminium structure
- Printing speed 150mm/sec
- Frontal or back paper in
- Silicon rubber paper feeding roll
- Paper feed motor with high couple
- Possibility to manage labels too

### CONTROL BOARD FEATURES

- RS232 and USB interface
- Barcodes: UPC-A, UPC-E, EAN13, EAN8, CODE39, INTERLEAVED 2-5, CODABAR, CODE93, CODE128, CODE32 PHARMACEUTICO, UCC/EAN-128 (optional)
- Fonts: European, International, Portuguese, Nordic, Chinese (optional)
- Highly reliable cutter: > of 1,000,000 cuts
- MTBF > of 435,000 hours
- Sensors: head temperature, paper presence, printing head open, paper end and near paper end (optional: near paper end on holder support)

### SOFTWARE FEATURES

- Self-installing driver for WinXP/Vista/7 (+64bit support)
- Linux drivers
- Remote Status Monitor
- Customizable fonts and logos: LogoMake, FontMake, UpgCePrn

### MOST COMMON APPLICATIONS

- Inspection and security system
- Cash register/ Balances
- Measurement tools
- Portable tools



CM112



Printing kit with cutter



CM60

### AVAILABLE VERSIONS

- CM60 60mm 24Vdc
- CM60 60mm 24Vdc vertical mounting
- CM112 112mm 24Vdc
- CM112 112mm 24Vdc vertical mounting
- Control board for mec. CM60 RS232/USB, 24V
- Control board for mec. CM112 RS232/USB, 24V

	CM60	CM112
PRINTING METHOD	THERMAL DOT LINE	
NUMBER OF DOTS	448	832
RESOLUTION	8 DOT/MM-203 DPI	
PAPER WIDTH: (MM)	60	112
PRINT WIDTH: (MM)	56	104
PRINTING SPEED	>150 MM/SEC	>140 MM/SEC
POWER SUPPLY	24VDC	
DIMENSIONS MM (WXDXH)	108,6X60,2X40,9	160,6X60,2X40,9
WEIGHT	264 G	340 G
HEAD LIFE	50KM/ 100M PULSES	

### CONTROL BOARDS

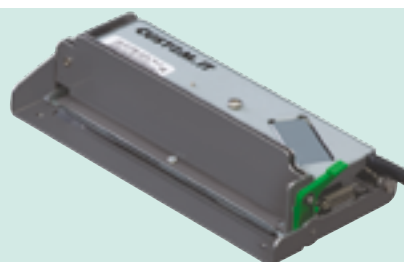


CM BOARD

### CUTTERS



60mm



112mm

