



187 Crosby Road
Dover, New Hampshire USA 03820
(603) 742-7095
www.telpar.com

Configuration Utility for MTP-2283, MTP-2242 & MTP-28XX

Introduction:

This procedure describes how to use the Configuration Utility to modify user configuration settings on the MTP thermal printers. The Configuration Utility is within the firmware of the printer. To enter the Configuration Utility and make changes to the printer follow the procedure below.

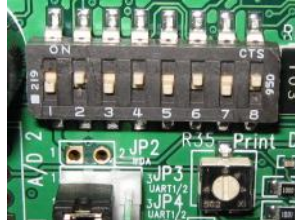
1. Connect a serial cable between a Windows PC and J9 on controller board.



2. Start a serial terminal program such as HyperTerminal with settings at 115,200-N-8-1.
 - a. Start > Programs > Accessories > Communications > HyperTerminal
 - b. Name Configuration
 - c. Select Comm Port
 - d. Configure port settings
 - i. 115,200 Baud
 - ii. 8 Data bits
 - iii. No Parity
 - iv. Flow Control – None

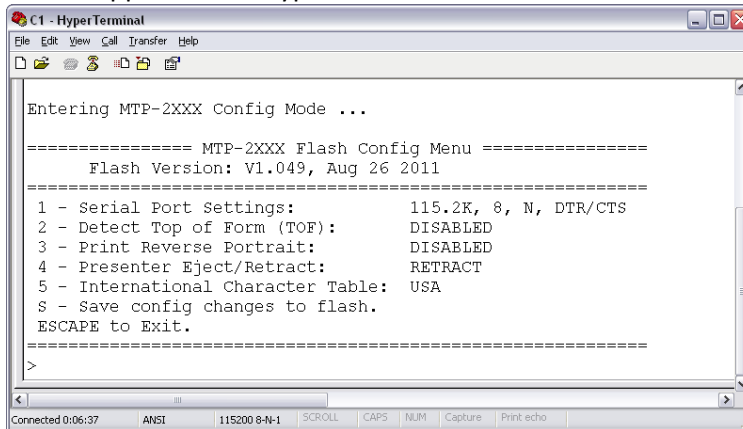


3. Set Printer Switch 1 Position 8 to ON.



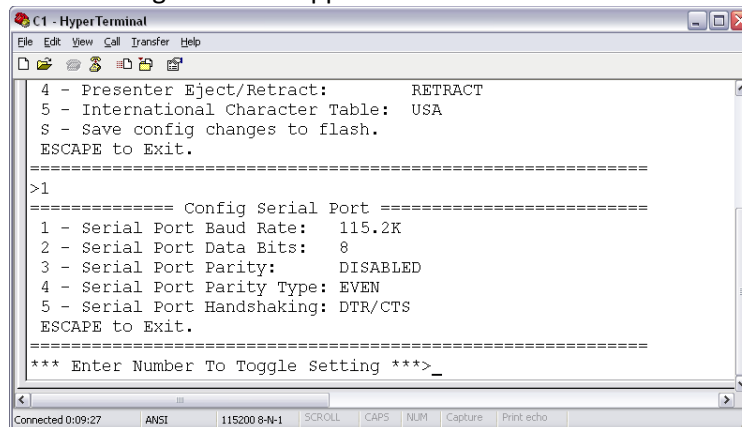
4. Turn the printer power on.

- a. Printer LED's 1 (green) and LED 4 (Red) will be blinking and the beeper will sound a beep every 2 seconds.
- b. A Menu will appear in the HyperTerminal window.



5. To change a setting enter the number to the left of the setting.

- a. For instance, enter "1" to change the Serial Port Settings.
- b. The following menu will appear.



c. Enter a number to change the desired setting.

6. Once completed with changes enter "S" to save the changes to flash memory.
7. Turn power off.
8. Restore Switch 1 position 8 to the OFF position.
9. Print a Self-Test to verify settings and printer operation.
 - a. Hold Feed Button while turning printer power on.
 - b. Release Feed button after one beep.