



187 Crosby Road  
Dover, New Hampshire USA 03820  
(603) 742-7095  
[www.telpar.com](http://www.telpar.com)

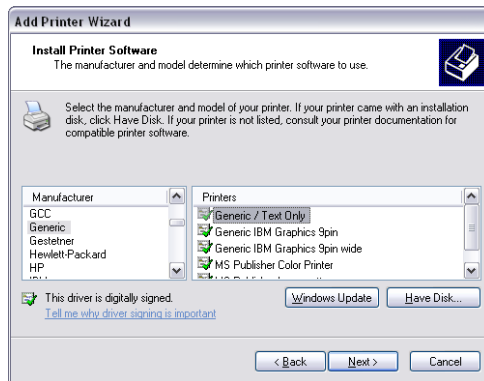
# Generic / Text Only Printer Driver Without a Formfeed

---

## Introduction:

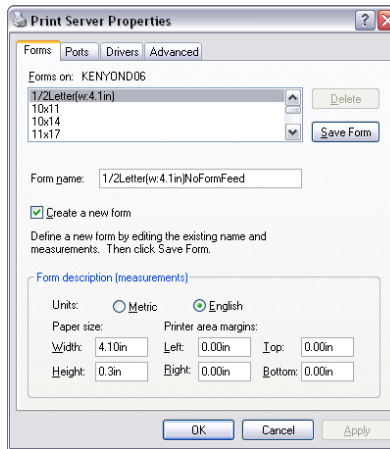
This procedure describes how to setup the Windows Generic / Text only printer driver to operate without a formfeed and cut the paper.

1. Install the Windows 'Generic/Text Only' printer driver.
  - a. Select 'Start->Settings->Printers and Faxes'.
  - b. In Printers and Faxes select 'Add a Printer'
  - c. Follow the wizard to add the printer.
    - i. At the 'Install Printer Software' window select the following:

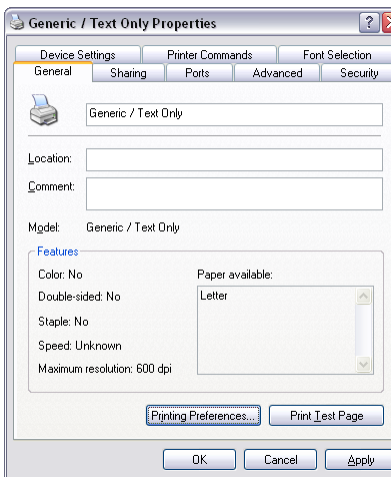


- ii. Continue with the wizard steps.

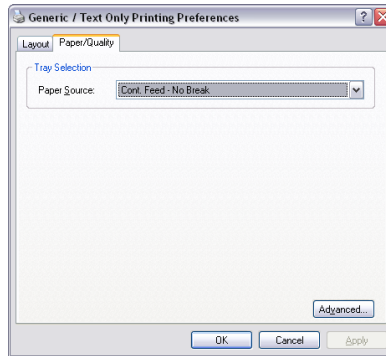
2. Create a new form.
  - a. In Printers and Faxes select 'Server Properties' from the File Menu.



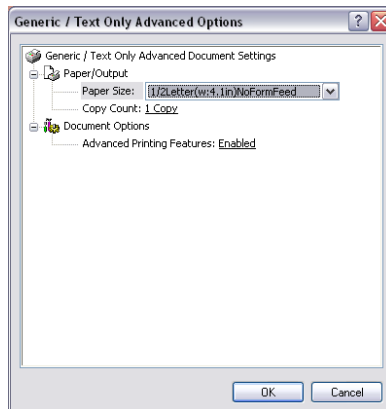
- b. Select '1/2Letter(w:4.1in)' under the forms tab.
  - c. Click 'Create a new form' to enable with a check mark
  - d. Change the form name as shown above, "1/2Letter(w:4.1in)NoFormFeed"
  - e. Update the 'Height:' to 0.3in.
  - f. Click the button "Save Form".
  - g. Select 'Close' to close the window.
3. Update the printer driver to use the new form.
    - a. In Printers and Faxes select 'Generic / Text only', right mouse click and select 'Properties'



- b. Update the Printing Preferences:
  - i. On the 'General' tab click 'Printing Preferences' button at the bottom of the window.
  - ii. Update the 'Paper/Quality Paper Source' to use 'Cont. Feed – No Break' as shown below.



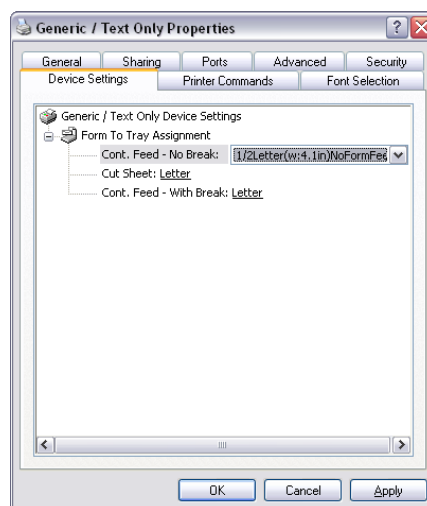
- iii. Click the 'Advanced' button at the bottom of the form and update the Paper Size to use the new form as shown below.



- iv. Click 'OK' to close both windows.

4. Update the Device Settings:

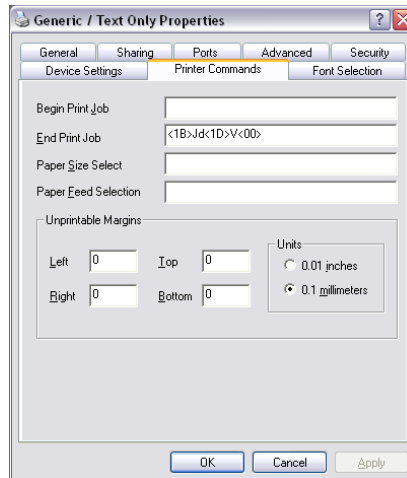
- a. Select 'Device Settings' tab as shown below and update the 'Cont. Feed – No Break' to use the new form.



- b. Click 'Apply'

5. Add 'Advance Forward' and 'Paper Cut' command at end of document.

- a. Select 'Printer Commands' Tab and update as shown:



- i. The printer escape sequences shown are as follows
  1. <1B>Jd = ESC J 0x64, Advance paper forward 100 dot lines, approximately ½ inch.
  2. <1D>V<00> = GS V 0, Paper Cut full command.

b. Click 'OK' to close the window.

6. Update the document being printed to use the Generic / Text printer and the new form.